

**WHEELER/REX 6790
(N100A)**

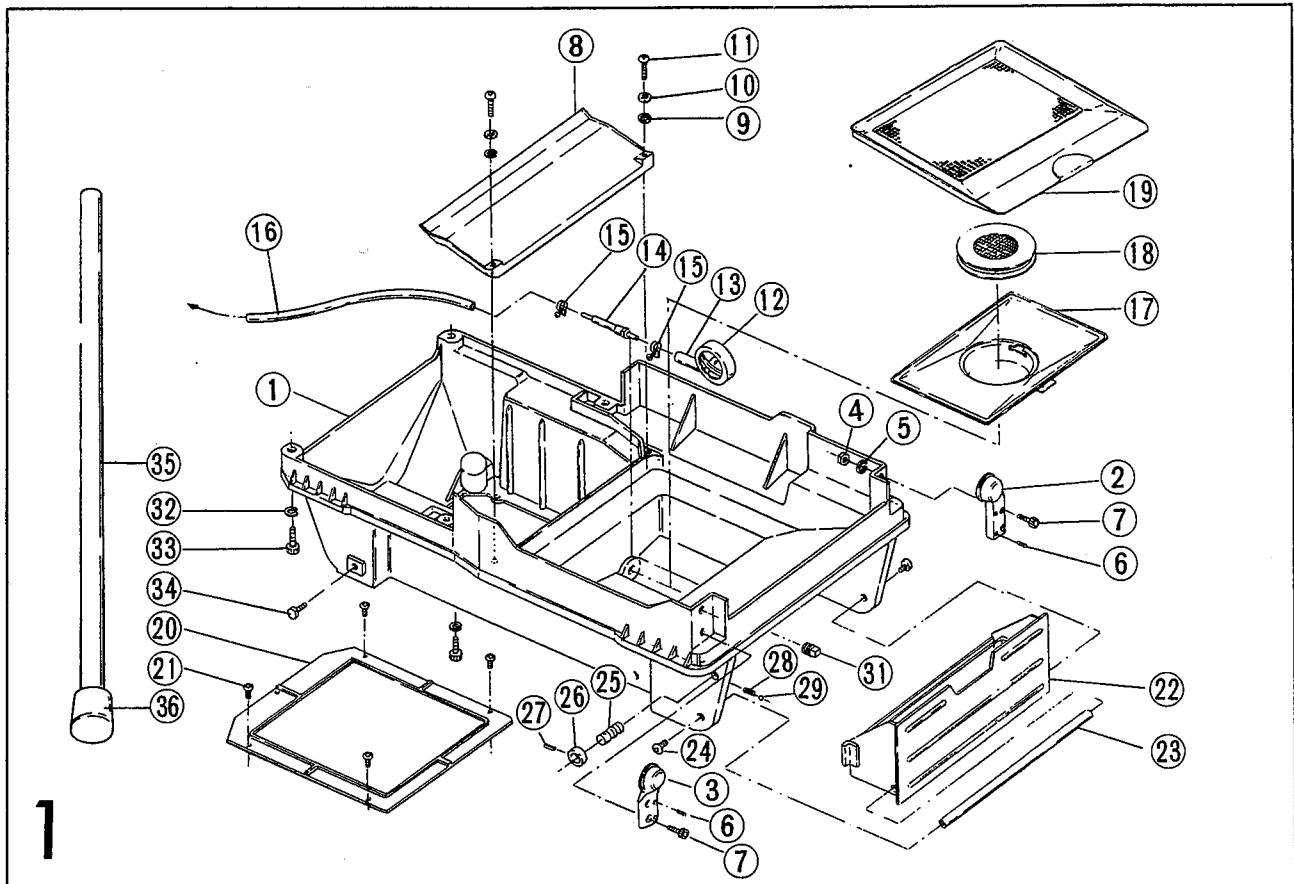
Parts List

Ref. No. 199107



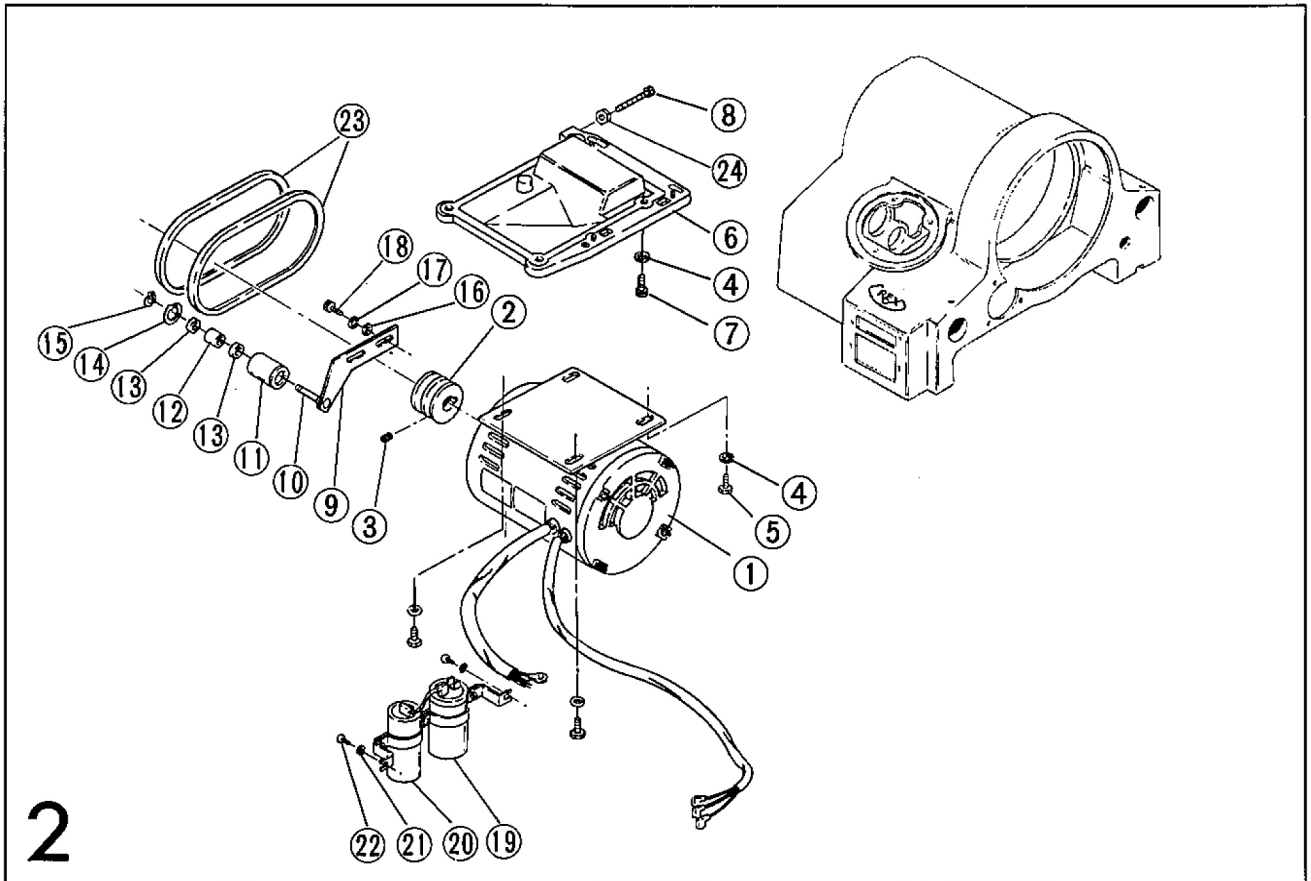
REX Industries Co.,Ltd.

WHEELER/REX 6790 (N100A) (Base)



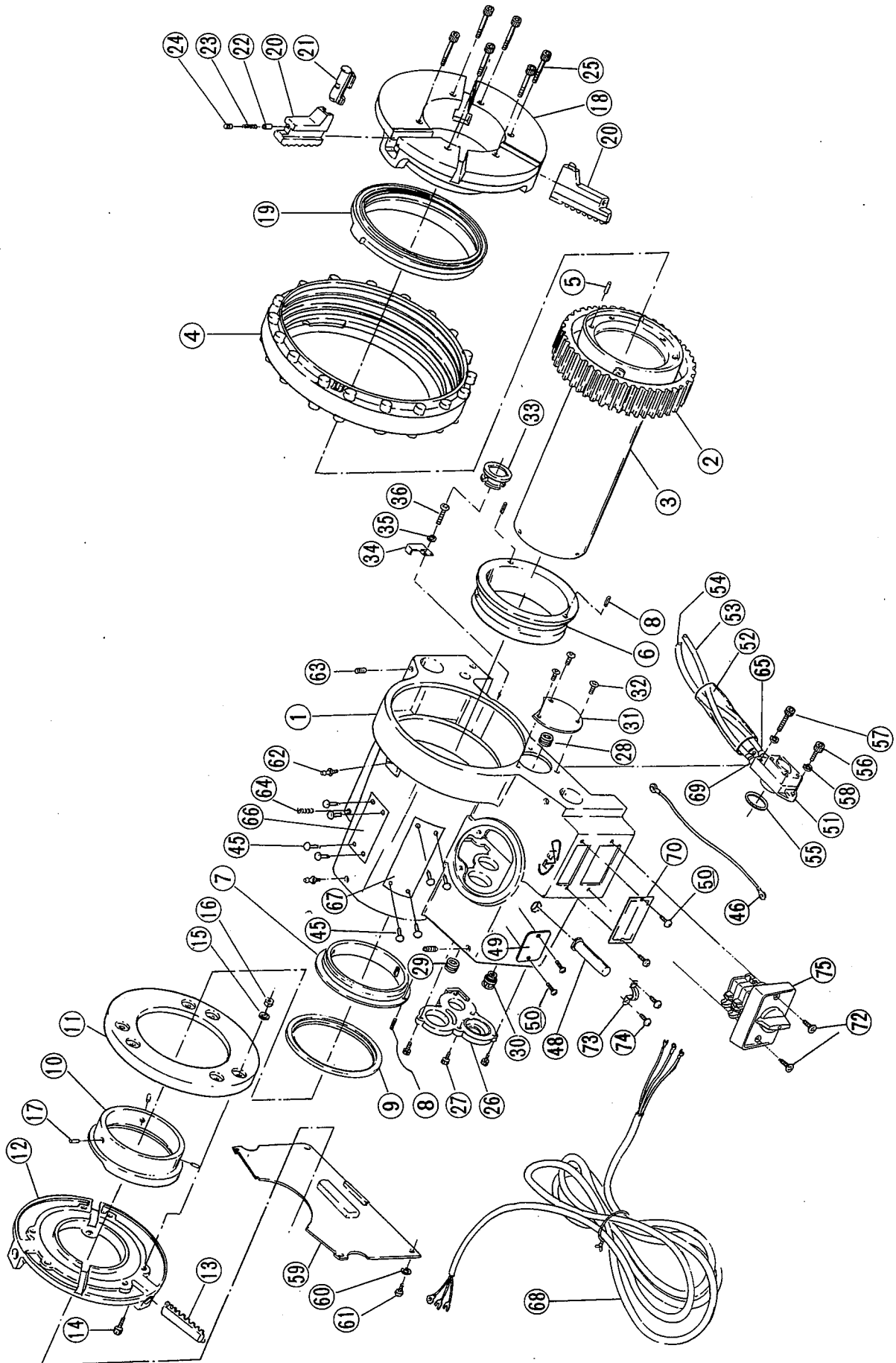
No.	Part No. (Wheeler)	Part Name	Set	Part No. (REX)	
1	603500	Base	1	J001	
2	603501	Support (Right)	1	J002	
3	603502	Support (Left)	1	J003	
4	600328	Nut	(M8) 4	WC08	
5	600130	Spring washer	(φ8) 4	WG08	
6	600344	Roll pin	(φ6×28) 4	WL65	
7	603503	Torx socket head cap screw	(M8×25) 4	W083	
8	603504	Base cover	1	J006	
9	600248	Washer	(φ5) 2	W152	
10	600124	Spring washer	(φ5) 2	WG05	
11	600649	Round head machine screw	(M5×25) 2	W255	
12	600731	Strainer	1	N048	Set Tapping screw (M5×10) 6090
13	603505	Oil intake line suction tube (A)	1		
14	603506	Nipple	1	J015	
15	600213	Pipe band	2	ZJ50	6090, 6190, 6390, 6490, 6590
16	603550	Oil intake line suction tube			
17	603507	Tank upper cover	1	J004	
18	603508	Upper cover strainer cap	1	J005	
19	603509	Scrap receiver	1	J007	
20	603510	Bottom cover	1	J008	
21	600329	Round head machine screw	(M5×8) 4	W251	
22	603511	Built-in tool box	1	J010	
23	603512	Tool box shaft	1	J011	
24	603513	Truss screw	(M8×20) 2	W585	
25	603514	Stopper pin A	1	J012	
26	603515	Stopper pin B	1	J013	
27	603516	Roll pin	(φ4×20) 1		
28	603517	Spring	(φ5×12) 1	7752	
29	600346	Steel ball	(φ5) 1	WQ05	
30					
31	600183	Drain plug	1	WA46	
32	600429	Spring washer	(φ10) 4	WG10	
33	600181	Socket head cap screw	(M10×40) 4	WG04	
34	600249	Hexagon head cap screw	(M10×30) 4	W101	
35	603519	Pipe stand with leg cap	4		N121 + N125 6090, 6190, 6390, 6490, 6590
36	603520	Leg cap	4	N125	6090, 6190, 6390, 6490, 6590
37					
38					
39					
40					

WHEELER/REX 6790 (N100A) (Motor)



No.	Part No. (Wheeler)	Part Name	Set	Part No. (REX)		
1	6 0 3 5 2 1	Condenser motor (1.0kw 120/240V)	1	J 0 3 0 T		
2	6 0 3 5 2 2	Motor pulley	1	4 9 3 1		
3	600219	Hex-socket set screw (M8×8)	1	W 7 8 A		
4	6 0 3 5 2 3	Spring washer (φ10)	8	W G 1 0		
5	6 0 0 4 7 3	Hexagon head cap screw (M10×20)	4	W 1 8 1		
6	6 0 3 5 2 4	Motor holder	1	J 0 2 0		
7	6 0 3 5 2 5	Socket head cap screw (M10×25)	4	W 0 0 2		
8	6 0 0 1 9 3	Socket head cap screw (M8×60)	1	W 0 8 C		
9		Tension pulley adjustment mounting	1	J 0 2 3	603526 Set (J019)	
10		Tension pulley adjustment pin	1	J 0 2 4		
11	6 0 3 5 2 7	Tension pulley	1	J 0 2 5		OJHPIS Tension pulley complete set
12	6 0 3 5 2 8	Tension pulley bearing collar	1	J 0 2 6		
13	6 0 3 5 2 9	Bearing (#6001ZZ)	2	J 3 0 0		
14	6 0 3 5 3 0	Snap ring (in side φ28)	1	W W A 2		
15	6 0 3 5 3 1	Snap ring (out side φ12)	1	W W I 2		
16	6 0 0 2 4 5	Washer (φ8)	2	W 1 8 4		
17	6 0 0 1 3 0	Spring washer (φ8)	2	W G 0 8		
18	6 0 3 5 3 2	Socket head cap screw (M8×20)	2	W 0 8 2		
19		Driver condenser	1	49CST	Condenser set	
20		Starter condenser	1			
21	6 0 0 2 4 8	Washer (φ5)	2	W 1 5 2		
22	6 0 0 3 2 9	Round head machine screw (M5×8)	2	W 2 5 1		
23	6 0 3 5 3 3	V-belt (A-24)	2	Z 8 2 4		
24	6 0 0 3 2 8	Nut (M8)	1	W 0 0 8		
25						
26						
27						
28						
29						
30						
31						
32						
33						
34						
35						
36						
37						
38						
39						
40						

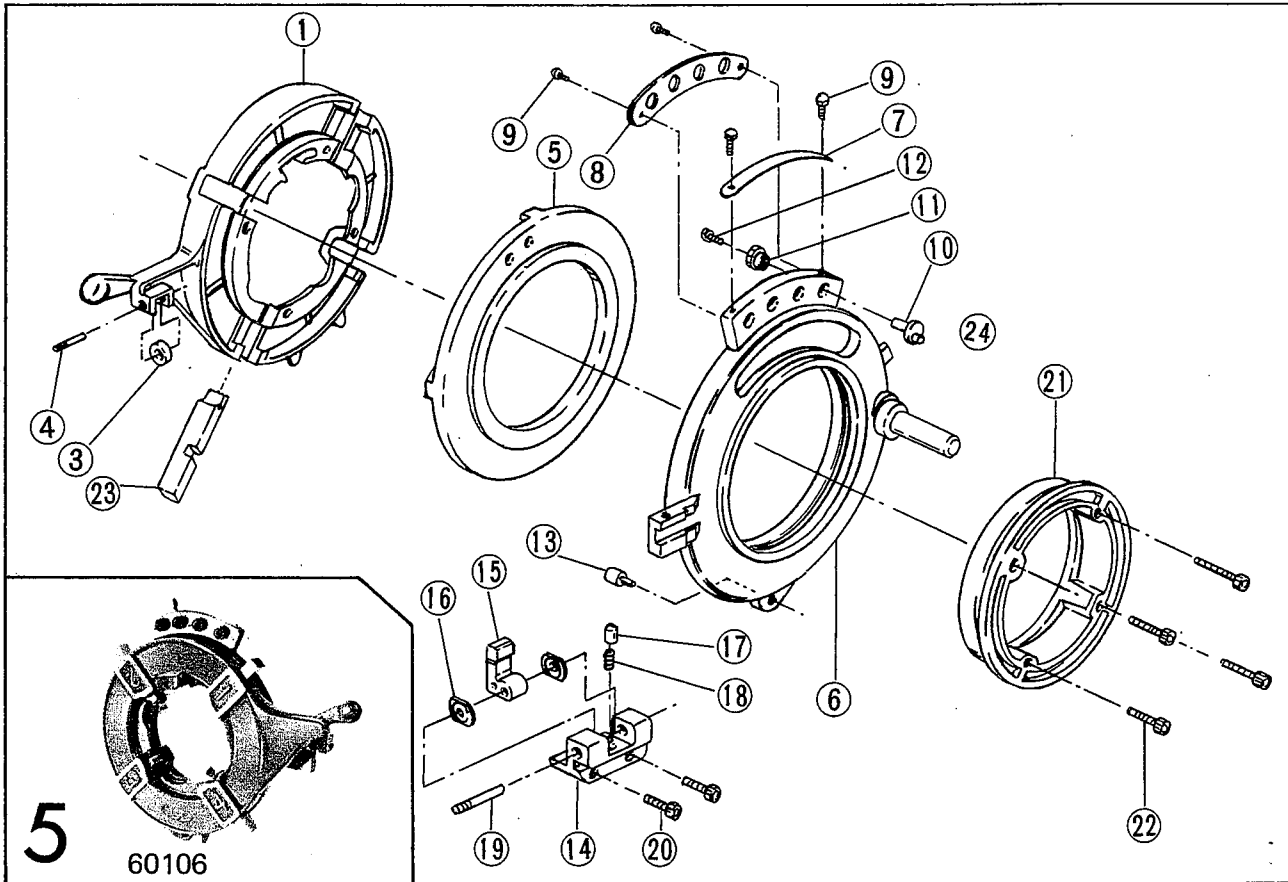
WHEELER/REX 6790 (N100A) (Main shaft stock)



No.	Part No. (Wheeler)	Part Name	Set	Part No. (REX)	
1	603534	Head stock	1	J048	
2	600290	Main shaft gear	1	J036	} Set (02JJ)
3		Main shaft	1	J038	
4	603537	Hand wheel	1	J703	
5	603538	Straight pin (φ8×20)	1	WN08	6490
6	607005	Front main shaft bearing	1	A005	6490
7	600867	Rear main shaft bearing	1	J039	6490
8	600127	Roll pin (φ4×10)	4		
9	607008	Thrust ring	1	A008	6490
10	607007	Rear scroll	1	J0S3	} 607006 Rear chuck complete set (A006) 6490
11	605014	Rear chuck cover	1	J0S2	
12	605012	Rear chuck receptacle	1	J0S1	
13	605013	Rear chuck jaw	3	A0SS	
14	600131	Socket head cap screw (M6×16)	6	W062	
15	600132	Spring washer (φ6)	6	WG06	
16	600177	Nut (M6)	6	WL63	
17	600149	Roll pin (φ6×18)	3	JH00	} 603542 Chuck complete set (RT-RT) (J051) } Chuck jaw set 603541 (JICJS) } 60307 Chuck jaw insert set (A0RT) 6490
18	603539	Chuck body	1	JS00	
19	603540	Scroll	1		
20	603541	Chuck jaw	3		
21		Chuck jaw insert	3		
22		Spring retainer	3		
23		Spring	3		
24		Set screw	6		
25	603543	Socket head cap screw (M7×54)	6		
26	603544	Gear case cover	1	J040	
27	603545	Socket head cap screw (M5×18)	6	W055	
28	600911	Hex-socket pipe plug (PT½)	1		
29	600623	Hex-socket pipe plug (PT½)	1	WA44	
30	603546	Oil gauge (N-1)	1	J320	
31	603547	Window cap	1	J042	
32	600179	Round head machine screw (M5×10)	3	W252	
33	604040	Hose guide	1	4040	6390
34	604086	Hose band	1	4086	6390
35	600132	Spring washer (φ6)	1	WG06	6390
36	600204	Round head machine screw (M6×10)	1		6390
45	600143	Rivet (#0×5)	4		
46	600942	Earth	1		
47					
48	600943	Cord bush	1	7021	6090,6390,6590,6890
49	600944	Name plate	1	J049	
50	600621	Rivet (#4×5)	2		
51	604025	Gear pump	1	4025	
52	603549	Vinyl tube 100 (ℓ)	1		
53	603550	Oil intake line suction tube (B) 700 (ℓ)	1	0410	
54	603551	Oil feed line tube 530 (ℓ)	1	0410	
55	603552	Gear pump gasket	1	J047	
56	600486	Socket head cap screw (M6×20)	1		
57	600222	Socket head cap screw (M6×35)	1		
58	600132	Spring washer (φ6)	2	WG6A	
59	603553	Rear cover	1	J041	
60	600248	Washer (φ5)	4		
61	600179	Round head machine screw (M5×10)	4	W252	
62	600198	Grease nipple (M6)	2		
63	603554	Hex-socket set screw (cone M8×22)	4		
64	603555	Hex-socket set screw (half dog M8×25)	1		
65	600213	Pipe band (10mm)	2	ZJ50	
66	603557	Warning plate A	1	L098	
67	603558	Warning plate B	1	L099	
68	600945	Power cord	1	Z992	
69	601035	Joint	2	1035	
70		Cam switch warning plate	1	J099	
71					
72	600937	Oval head machine screw (M4×10)	2		
73	600941	Binder C-15	1	7098	6090,6390,6590,6890
74	600191	Round head machine screw (M4×10)	1		6390
75	600959	Cam switch	1	F065	6090,6390,6590,6890
76	600960	Cam switch plate	1	F066	6090,6390,6590,6890
77					
78					
79					
80					
81					
82					

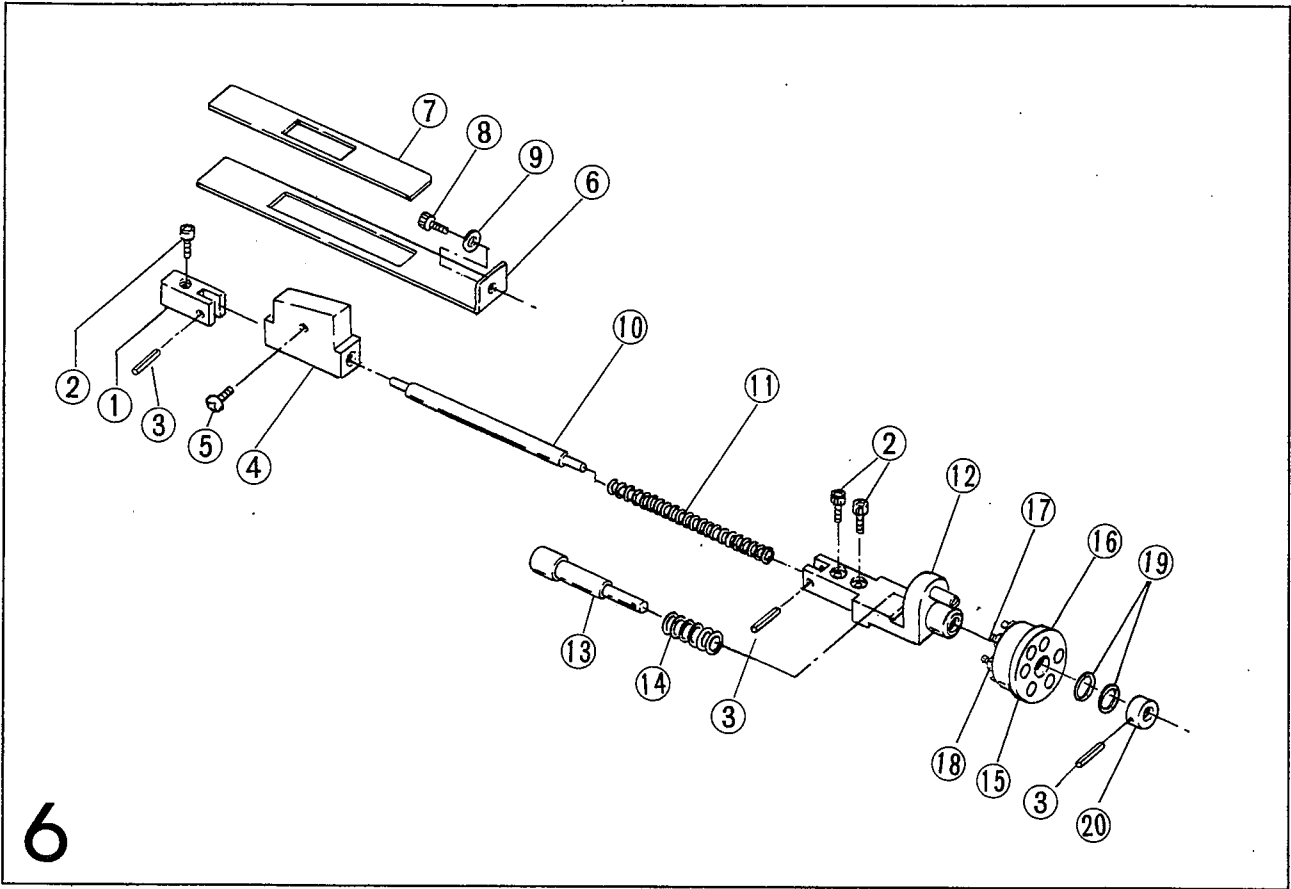
No.	Part No. (Wheeler)	Part Name	Set	Part No. (REX)		
1	6 0 0 7 7 9	Die head body	1	N 7 0 1		
2	6 0 0 7 8 0	Opening block	1	N 7 0 4		
3	6 0 0 6 8 8	Spring	1	7 6 9 7		
4	6 0 0 7 8 1	Lever pin	1	N 7 1 4		
5	6 0 0 7 8 2	Spring	1	N 7 2 0		
6	6 0 0 7 8 3	Spring	1	N 7 1 8		
7	6 0 0 7 8 4	Spring guide	($\phi 4 \times 18$)	1	N708	
8	6 0 0 6 6 2	Roll pin	($\phi 6 \times 16$)	1		
9	6 0 0 7 8 5	Auto-open pin		1	N 7 0 9	
10	6 0 0 7 8 6	Straight pin		1	N 7 1 6	
11	6 0 0 7 8 7	Open lever		1	N 7 1 1	
12	6 0 0 6 6 3	Socket head cap screw	(M8 \times 15)	1		
13	6 0 0 7 8 8	Auto-open link		1	N 7 1 2	
14	6 0 0 4 7 2	Socket head cap screw	(M8 \times 10)	1		
15	6 0 0 2 4 5	Washer	($\phi 8$)	1		
16	6 0 0 7 8 9	Auto-open lever C		1	N 7 2 7	
17	6 0 0 7 9 0	Stop screw		2	N 7 1 7	
18	6 0 0 7 9 1	Cam plate		1	N 7 0 2	
19	6 0 0 7 9 2	Size plate		1	N 7 3 0	
20	6 0 0 6 6 8	Truss screw	(M4 \times 5)	2	W541	
21	6 0 0 7 9 3	Retaining ring		1	N 7 0 3	Set Dies notch (G865)
22	6 0 0 1 3 1	Socket head cap screw	(M6 \times 16)	4		
23	6 0 0 7 9 4	Cam plate fixed pin		1	N 7 0 6	
24	6 0 0 7 9 5	Spring		1	N 7 2 2	
25	6 0 0 7 9 6	Eccentric washer		1	N 7 0 8	
26	6 0 0 7 9 7	Lever nut		1	N 7 0 5	
27	6 0 0 7 9 8	Nut	(M20)	1	N 7 0 7	
28	6 0 0 6 6 4	Snap ring	(out side $\phi 20$)	1		
29	6 0 0 6 6 5	Roll pin	($\phi 5 \times 14$)	1		
30	6 0 2 0 1	Dies ($1/2 \sim 3/4$)		1 set	X 0 4 1	
	6 0 2 0 9	Dies (1 \sim 2)		1 set	X 0 8 1	
31	6 0 0 9 1 0	Die head post		1	7713	
32	6 0 6 7 1 9	Hex socket set screw		1		
33	6 0 1 1 8	Complete die head		1		6090
34						
35						
36						
37						
38						
39						
40						
41						
42						
43						
44						
45						
46						
47						
48						
49						
50						
51						
52						
53						
54						
55						
56						
57						
58						
59						
60						
61						
62						
63						
64						
65						
66						
67						
68						
69						
70						
71						

WHEELER/REX 6790 (N100A) (Profiling die head 2½~4")



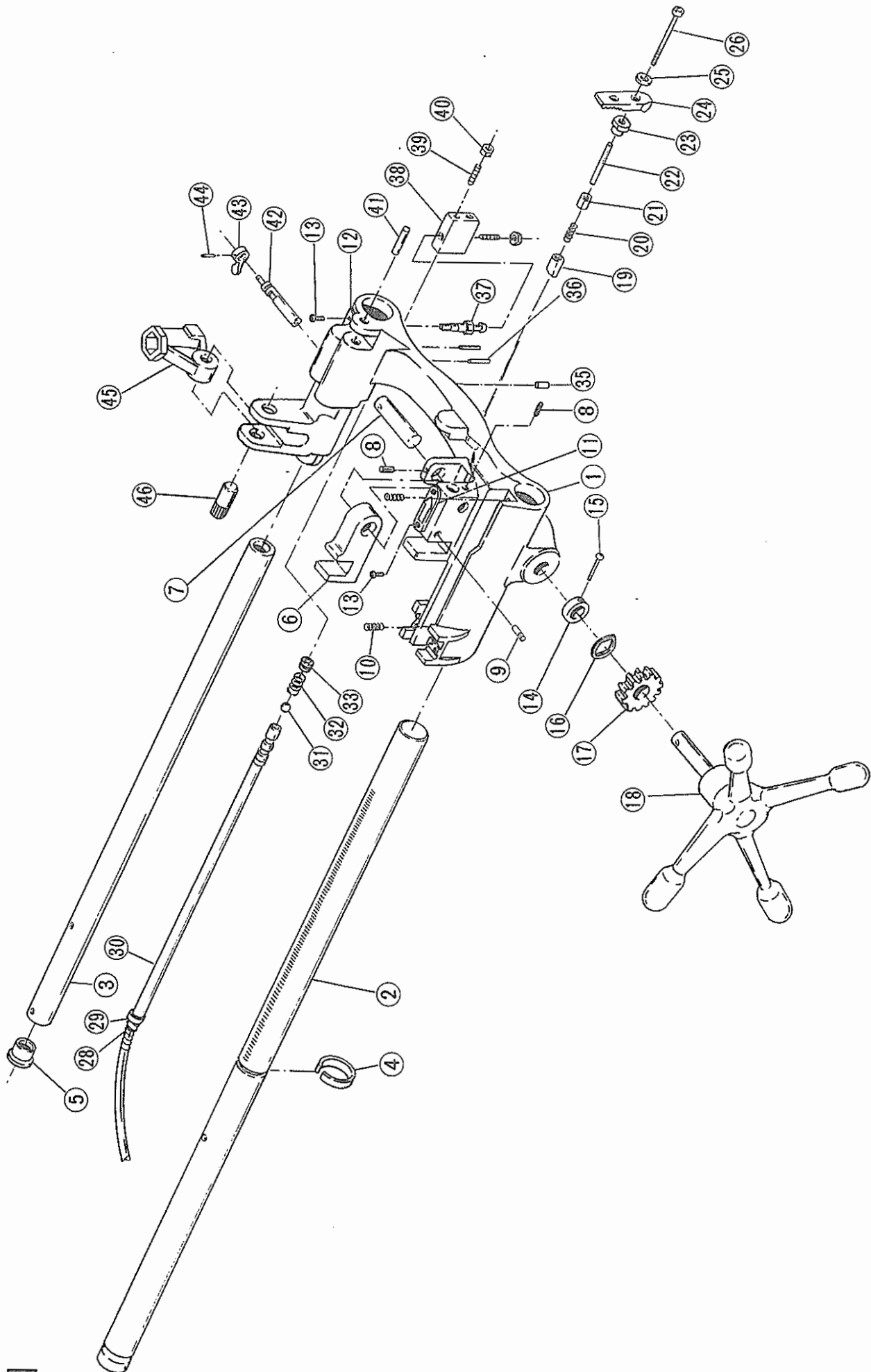
No.	Part No. (Wheeler)	Part Name	Set	Part No. (REX)	
1	6 0 0 8 6 5	Die head body (2½~4)	1	J 1 0 3	
2					
3	6 0 3 5 6 0	Die head roller	1	T 0 0 8	6590
4	6 0 3 4 1 2	Die head roller pin	1	3 4 1 2	6490, 6590
5	6 0 3 5 6 1	Cam plate (2½~4)	1	J 0 6 7	6590
6	6 0 3 5 6 2	Die head receiver plate (2½~4)	1	J 1 0 0	Set Die head post (J076)
7	6 0 3 5 6 3	Die head size plate (2½~4)	1	J 1 0 2	
8	6 0 3 5 6 4	Adjustment plate (2½~4)	1	J 1 0 1	
9	6 0 0 6 2 1	Rivet (#4×5)	4		6590
10	6 0 4 6 9 2	Crank pin	4	7 6 9 2	6390, 6590
11	6 0 4 6 9 3	Size adjustment knob	4	7 6 9 3	6390, 6590
12	6 0 0 4 7 9	Socket head cap screw (M6×10)	4		6590
13	6 0 3 5 6 5	Die head position pin	1	J 0 7 7	6590
14	6 0 3 5 6 6	Size setting lever holder (2½~4)	1	J 0 7 3	6590
15	6 0 4 6 9 0	Size setting lever	1	7 6 9 0	6390, 6590
16	6 0 4 7 4 3	Size adjustment plate	2	7 7 4 3	6390, 6590
17	6 0 4 7 9 0	Notch pin	1	7 7 9 0	6390, 6590
18	6 0 0 6 8 7	Spring (φ5×12)	1	7 7 5 2	6390, 6590
19	6 0 4 7 4 2	Retaining pin	1	7 7 4 2	6390, 6590
20	6 0 0 5 3 2	Socket head cap screw (M8×20)	2		6590
21	6 0 3 5 6 7	Retaining ring (2½~4)	1	J 0 6 8	Set Dies notch (G860) 6590
22	6 0 0 2 3 8	Socket head cap screw (M6×40)	4		6490, 6590
23	6 0 2 0 6	Dies (2½~4)	1 set	162360	6490, 6590
24	6 0 3 6 8 7	Die head post	1	J076	
25					
26	6 0 1 0 6	Complete die head			
27					
28					
29					
30					
31					
32					
33					
34					
35					
36					
37					
38					
39					
40					

WHEELER/REX 6790 (N100A) (Carriage < Profiling >)



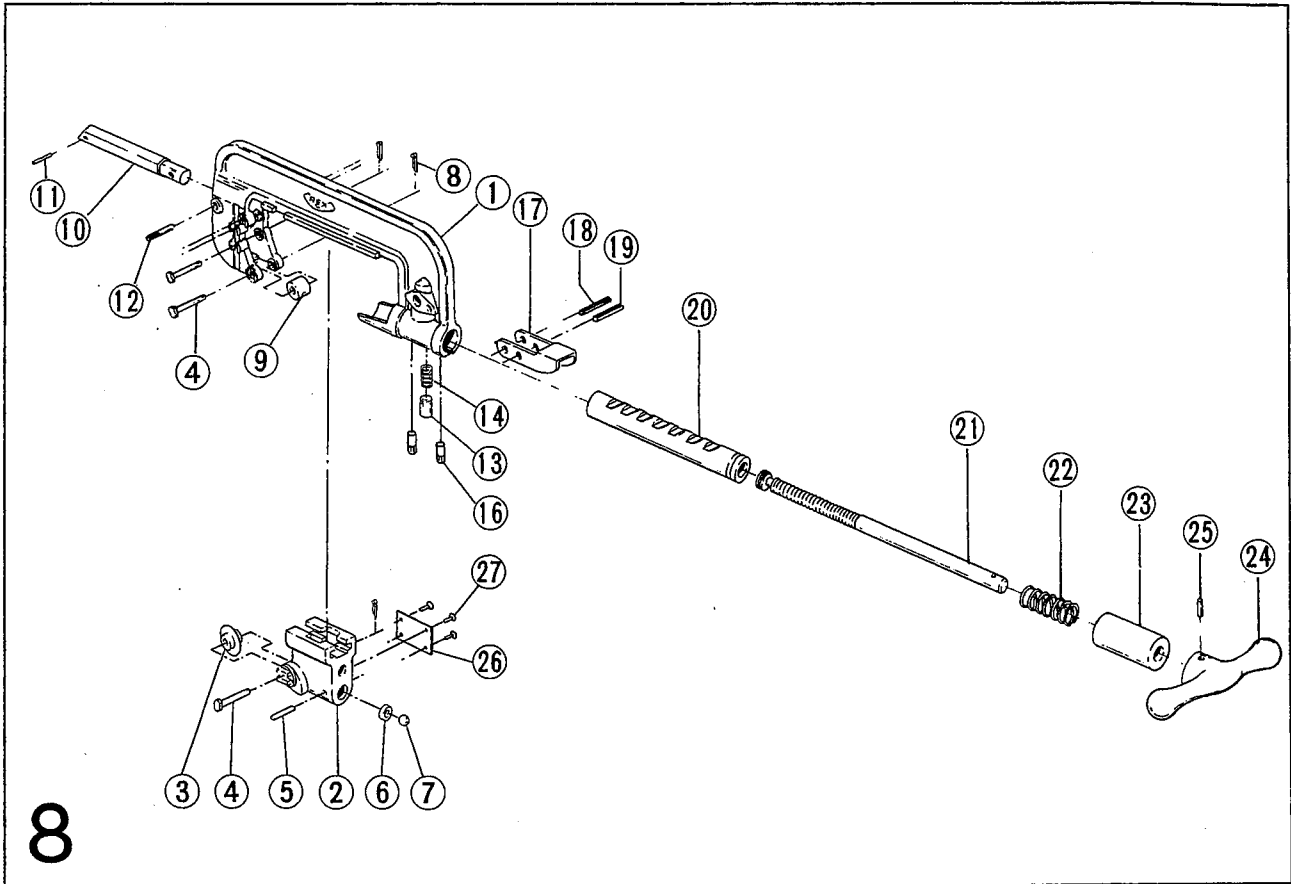
No.	Part No. (Wheeler)	Part Name	Set	Part No. (REX)	
1	6 0 3 5 6 8	Spring support shaft holder A	1	J 1 1 6	
2	6 0 0 4 8 6	Socket head cap screw (M6×16)	3	W062	
3	6 0 0 5 1 6	Roll pin (φ4×20)	3	WL46	6590
4	6 0 3 5 6 9	Profiling board	1	J 1 1 5	
5	6 0 0 4 3 2	Round head machine screw (M5×6)	1	W250	6590
6	6 0 3 5 7 0	Profiling cover A	1	J 1 2 1	
7	6 0 3 5 7 1	Profiling cover B	1	J 1 2 2	
8	6 0 0 4 7 2	Socket head cap screw (M8×10)	1	W084	6590
9	6 0 0 2 4 5	Washer (φ8)	1		6590
10	6 0 3 5 7 2	Spring support shaft	1	J 1 2 3	
11	6 0 3 5 7 3	Spring	1	J 1 4 9	
12	6 0 3 5 7 4	Spring support shaft holder B	1	J 1 1 7	Set Size stopper pin (J120)
13	6 0 3 5 7 5	Size adjustment shaft	1	J 1 1 9	
14	6 0 3 5 7 6	Spring	1	J 1 5 0	
15	6 0 3 5 7 7	Size plate	1	J 1 2 4	
16	6 0 3 5 7 8	Size plate cover	1	J 1 3 5	
17	6 0 3 5 7 9	Socket head cap screw (4")	1	J 2 3 9	603679 Profiling block assembly (0JSA3S)
	6 0 3 5 8 0	Socket head cap screw (3½")	1	J 2 3 1	
	6 0 3 5 8 1	Socket head cap screw (3")	1	J 2 4 1	
	6 0 3 5 8 2	Socket head cap screw (2½")	1	J 2 4 2	
18	6 0 3 5 8 3	Spring	1	J 1 5 1	
19	6 0 3 5 8 4	Wave washer (φ12)	2	WH12	6590
20	6 0 3 5 8 5	Stop collar	1	J 1 2 6	6590
21					
22					
23	600283	Complete profiling assembly			
24					
25					
26					
27					
28					
29					
30					
31					
32					
33					
34					
35					
36					
37					

WHEELER/REX 6790 (N100A) (Carriage)



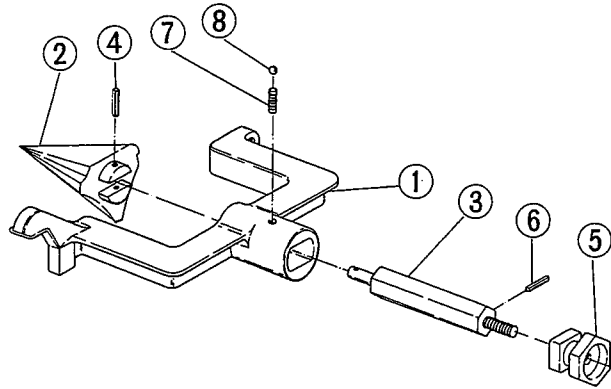
No.	Part No. (Wheeler)	Part Name	Set	Part No. (REX)	
1	603586	Carriage	1	J110	
2	603587	Carriage support bar A	1	J111	
3	603588	Carriage support bar B	1	J112	
4	603589	Carriage support collar	1	7911	
5	603590	Carriage support bar B cap	1	J148	
6	603591	Die head holder	1	J113	
7	603592	Die head holder shaft	1	J114	
8	600483	Roll pin (φ5×12)	1		
9		Oil joint pin	1	1036	
10	600434	Spring	2	E140	6590
11	603594	Open plate	1	J145	
12	603595	Oil flow selector plate	1	J155	
13	600621	Rivet (#4×5)	4		
14	609018	Feed gear stop ring	1	9018	6490,6590
15	600341	Round head machine screw (M5×30)	1		6490,6590
16	600810	Wave washer (φ20)	1		6190,6490,6590
17	607515	Carriage feed gear	1	A515	6190,6590
18	607517	Carriage handle	1	A517	Set 607516 Feed gear shaft (A516) 6490,6590
19	607109	Die head stop pin	1	A109	6490,6590
20	607115	Spring	1	A115	6590
21	603596	Knob pin bush S	1	J147	
22	603597	Knob pin bush	1	J139	
23	607110	Die head stop pin cover	1	A110	6490,6590
24	603598	Die head lock knob	1	J136	
25	603599	Hemi-spherical washer (φ5)	1	J137	
26	603600	Socket head cap screw (M5×60)	1		
27					
28	600213	Copper wire (φ0.8×200ℓ)	1		
29	601035	Oil joint	1	1035	6590
30	603601	Oil pipe (Large)	1	J140	
31					
32	603602	Spring	1		
33	600169	Hex-socket set screw (M10×10)	1		
34					
35	606488	Ball plunger (φ10)	1	G861	
36	603603	Roll pin (φ5×45)	2		
37	603604	Oil pipe (Smool)	1	J142	
38	603605	Oil pipe connector	1	J141	
39	603606	Hex-socket set screw (cone M6×25)	2		
40	600811	Jam nut (M6)	2		
41	609045	Reamer arm stop pin	1	1096	6090,6390
42	603607	Oil flow selector shaft	1	J143	Set O-ring (φ12)
43	603608	Oil flow selector lever	1	J144	
44	600207	Roll pin (φ3×18)	1		
45	603609	Cutter arm	1	J162	
46	603610	Cutter arm stop pin	1	J166	
47					
48					
49					
50					
51					
52					
53					
54					
55					
56					
57					
58					
59					
60					
61					
62					
63					
64					
65					
66					
67					
68					
69					
70					
71					
72					

WHEELER/REX 6790 (N100A) (Cutter)



No.	Part No. (Wheeler)	Part Name	Set	Part No. (REX)	
1	6 0 3 6 1 1	Cutter frame	1	J 1 6 0	
2	6 0 3 6 1 2	Cutter guide	1	J 1 6 1	
3	6 0 3 2 4	Cutter wheel	1	E 2 2 6	6490
4	6 0 0 6 7 0	Cutter pin L	5	E 2 2 5	6490
5	6 0 0 4 8 7	Roll pin ($\phi 5 \times 30$)	1		
6	6 0 3 6 1 3	Thrust roller	1	J 1 6 4	
7	6 0 3 6 1 4	Steel ball ($\phi 10$)	1		
8	6 0 0 1 7 1	Spring cotter (#2.3 \times 15)	5		6390, 6490, 6590
9	6 0 5 0 7 4	Cutter roller	4	5 0 7 4	6390, 6490, 6590
10	6 0 3 6 1 5	Cutter arm shaft	1	J 1 6 5	
11	6 0 3 6 1 6	Roll pin ($\phi 5 \times 35$)	1		
12	6 0 9 0 2 7	Cutter guide pin	1	9 0 2 7	
13	6 0 3 6 1 8	Adjustment pin	1	J 1 7 0	6090
14	6 0 3 6 1 9	Spring	1	J 1 7 4	
15					
16	6 0 0 4 8 3	Pin	2	J 1 7 5	
17	6 0 3 6 2 1	Open lever	1	J 1 7 1	
18	6 0 0 1 7 4	Roll pin ($\phi 6 \times 45$)	1		
19	6 0 0 4 8 2	Roll pin ($\phi 8 \times 45$)	1		
20	6 0 3 6 2 2	Feed holder	1	J 1 6 8	
21	6 0 3 6 2 3	Feed screw	1	J 1 6 3	
22	6 0 3 6 2 4	Spring	1	J 1 7 3	
23	6 0 3 6 2 5	Stop cap	1	J 1 6 9	
24	6 0 3 6 2 6	Cutter handle	1	E 2 0 5	6590
25	6 0 3 6 2 7	Roll pin ($\phi 6 \times 35$)	1		6490, 6590
26	6 0 3 6 2 8	Cutter caution plate	1		
27	6 0 0 1 4 3	Rivet (#0 \times 5)	4		
28					
29					
30	6 0 3 6 8 0	Complete cutter		0 2 J P	
31					
32					
33					
34					
35					
36					
37					
38					
39					
40					

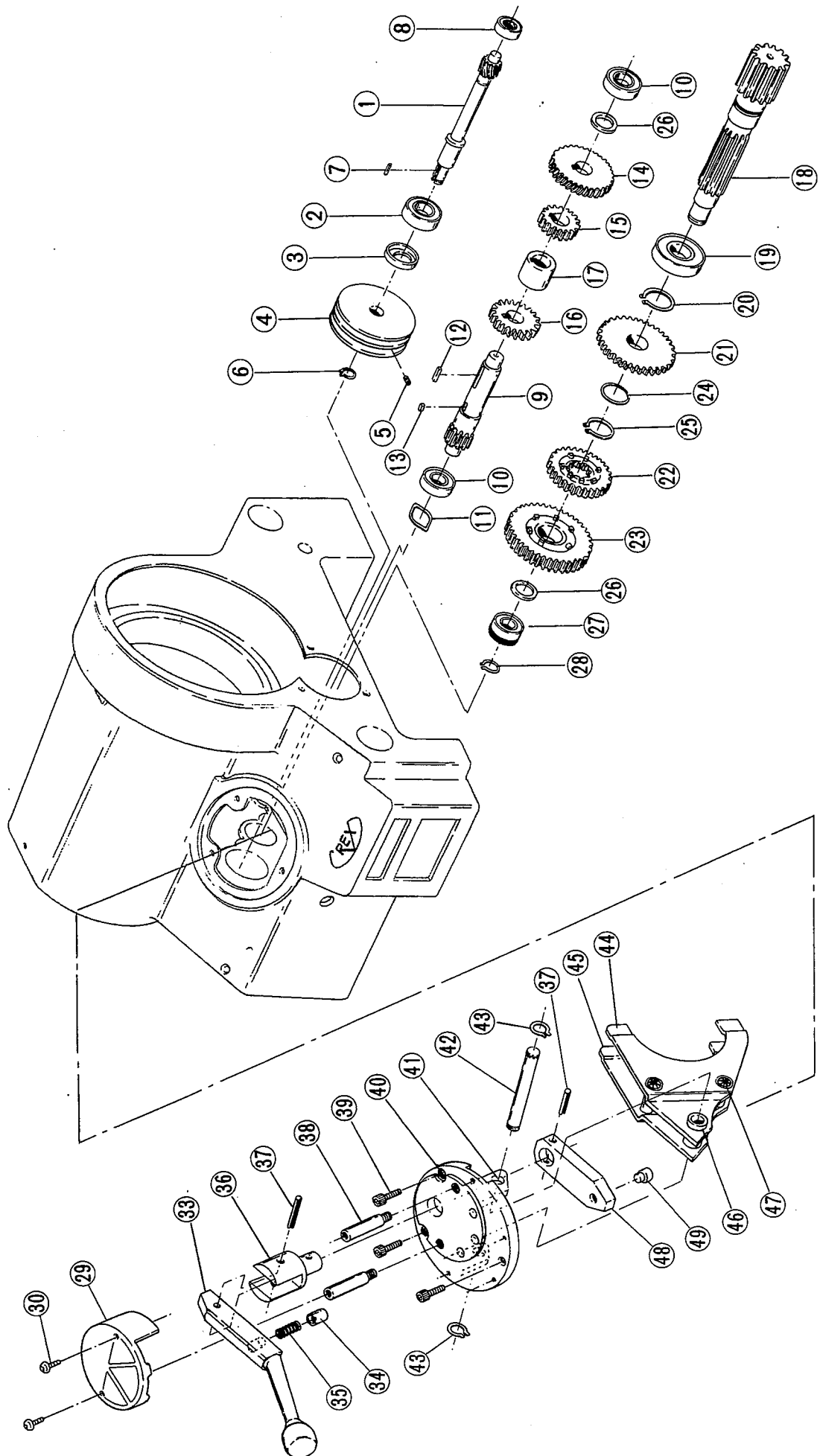
WHEELER/REX 6790 (N100A) (Reamer)



9

No.	Part No. (Wheeler)	Part Name	Set	Part No. (REX)	
1	6 0 3 6 2 9	Reamer arm	1	A 5 2 1	
2	6 0 3 0 3	Reamer cone	1	A 5 2 2	6490
3	6 0 7 2 5 3	Reamer shaft	1	A 2 5 3	6490, 6590
4	6 0 0 2 2 7	Roll pin ($\phi 8 \times 50$)	1		6590
5	6 0 1 0 9 4	Reamer knob	1	1 0 9 4	6390, 6490, 6590
6	6 0 0 1 2 7	Roll pin ($\phi 4 \times 10$)	1		6390, 6590
7	6 0 0 2 2 4	Spring ($\phi 8 \times 10$)	1	5 0 9 6	6090, 6190, 6490, 6590
8	6 0 0 1 6 8	Steel ball ($\phi 8$)	1		6090, 6190, 6490, 6590
9					
10					
11	6 0 3 6 8 1	Complete reamer		0 2 J R	
12					
13					
14					
15					
16					
17					
18					
19					
20					
21					
22					
23					
24					
25					
26					
27					
28					
29					
30					
31					
32					
33					
34					
35					
36					
37					
38					
39					
40					

WHEELER/REX 6790 (N100A) (Gear case)



No.	Part No. (Wheeler)	Part Name	Set	Part No. (REX)	
1	603630	A shaft	1	J180	
2	607192	Bearing (#6205LL)	1	A192	6490,6590
3	603631	Oil seal (TCV254511)	1	J310	
4	603632	Mission pulley	1		
5	600669	Hex-socket set screw (M8×12)	1		
6	600679	Snap ring (out side φ18)	1		
7	600484	Key (5×5×20)	1		
8	603633	Bearing (#6202LL)	1	H272	6390
9	603634	B shaft	1	J181	
10	607191	Bearing (#6004LL)	2	A191	6490,6590
11	600810	Wave washer (BWW6203)	1		
12	603635	Key (8×7×22)	1		
13	603636	Key (8×7×12)	1		
14	603637	B shaft gear A	1	J182	
15	600638	B shaft gear B	1	J183	
16	603639	B shaft gear C	1	J184	
17	603640	B shaft collar	1	J192	
18	603641	C shaft	1	J185	
19	603642	Bearing (#6007LLU)	1	J302	
20	603643	Snap ring (out side φ35)	1		
21	603644	C shaft gear A	1	J186	
22	603645	C shaft gear B	1	J187	
23	603646	C shaft gear C	1	J188	
24	603647	C shaft collar (Smool)	1	J194	
25	603648	Snap ring (out side φ30)	1		
26	603649	C shaft collar (Large)	2	J193	
27	603650	Bearing (#6204ZNR)	1	J301	
28	600664	Snap ring (out side φ20)	1		
29	603665	Speed change cap	1	J201	
30	603666	Socket button head cap screw (M6×15)	2		
31					
32					
33	603668	Speed change lever	1	J202	
34	603669	Notch pin	1	J203	
35	603670	Spring	1	J216	
36	603671	Speed change shaft	1	J204	
37	600344	Roll pin (φ6×30)	2		
38	603672	Stud bolt	2	J215	
39	600131	Socket head cap screw (M6×16)	3		
40		Speed change cover	1	J200	} 603673 Set (J220)
41		Speed change guide	1	J206	
42	603674	Guide pin	1	J207	
43	603675	Snap ring (out side φ10)	2		
44		Gear shift fork A	1	J209	} 603676 Set (J221)
45		Gear shift fork B	1	J210	
46		Shift pin A	1	J211	
47		Shift pin B	2	J212	
48	603677	Fork lever	1	J205	
49	603678	Fork lever pin	1	J208	
50					
51					
52					
53					
54					
55					
56					
57					
58					
59					
60					
61					
62					
63					
64					
65					
66					
67					
68					
69					
70					
71					
72					



WHEELER MANUFACTURING

Div. of REX International U.S.A., Inc.:

P.O.Box 688 · 3744 Jefferson Road · Ashtabula, Oh 44005

Ph:440 - 998 - 2788 · Fax.: 440 - 992 - 2925

Toll Free: 1 - 800 - 321 - 7950

Web Site: www.wheelerrex.com

Manufacturer:

REX

www.rexind.co.jp

REX INDUSTRIES CO., LTD.

N100A-WL
0803D 0050